

# Our site is currently under maintenance

Please check out our introduction slides that follows

# OMEC Intro

---



# Overview

- OMEC Shanghai factory
  - LF/HF/UHF/Combo RFID and PCB card
  - rPVC/PET/PC/PLA/Composite/Metal
  - Custom printing
  - DoD printing of white finished card
  - Other form factors:
    - clamshell, key fobs, wrist bands
- OMEC USA
  - Located in Cleveland, Ohio area
  - End-to-end card production capability
  - Sample available starting in June 2024

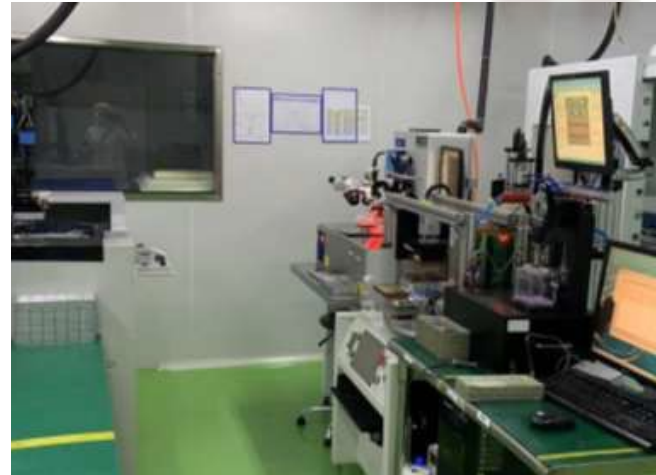
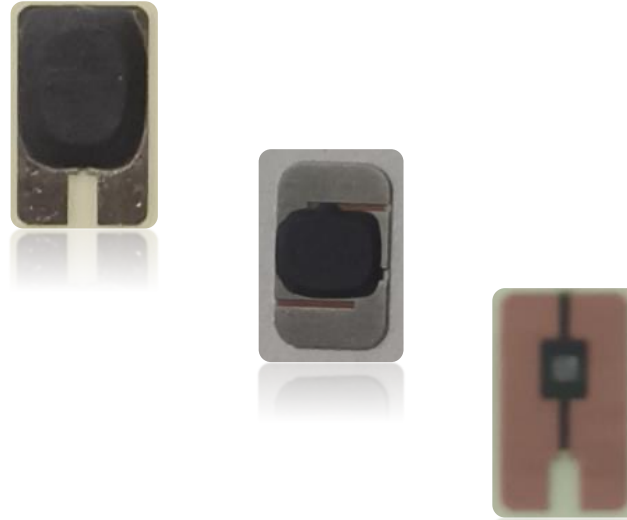


# OMEC Shanghai – Quick Facts

- OMEC Shanghai (Shanghai Oriental Magnetic Card Engineering Co., Ltd) was established in 1994
- Full Capabilities, annual capacity of 150 million cards and 120 million dual interface inlays
  - 2,500 m<sup>2</sup> (27,000 sq. ft) of factory production space
  - 6 production lines for contactless and dual interface products

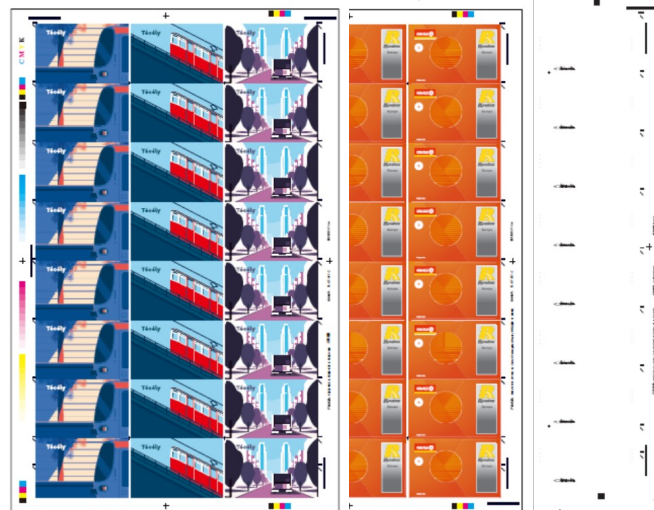
# Capabilities – COB Packaging

- ISO 1000 cleanroom
- Capability to customize COB form factor for specific products



# Capabilities – Printing

- Silk screen, offset, digital
- PVC, PET, ABS, PC, Teslin, PLA
- End-to-end color management to achieve  $\Delta E < 2$



## Capabilities – Assembling

- Low Frequency, High Frequency, UHF, Combo
- Automatic end-to-end assembling from coil winding to inlay



# Capabilities – Collating

- ISO 1000 clean room
- 1 fully automated line





## Capabilities – Lamination

- 3 highly automated lamination machines co-developed with vendor
  - PVC/R-PVC/C-PVC
  - PETE/PET-G
  - PC
  - PLA
  - Wide range of different composite options



## Capabilities – Card Finishing

- Punching
- Stamping
- Visual Inspection



# Capabilities – Dual Interface

- Dual interface inlay
- Printed antenna inlay available now
- Implant & Embedding
  - 4 production lines
  - Flex-bump
  - ACF



# Capabilities – Programming & Personalization

- Low frequency, high frequency, all protocols.
- Secure server for key/data exchange
- Laser engraving
- DoD printing



# OMEC USA Overview

- Located in Strongsville OH, currently under renovation (eta Feb. 2024)
  - Built upon learnings of our Shanghai factory
  - 1700m<sup>2</sup> (18,500 sq. ft) of factory production space
- Full Capabilities
  - From printing to programming
  - Highly automated
  - Improved intelligent manufacturing system



# Capabilities Overview

- Digital printing w/ VDP
- Assembling
  - Automated LF/HF/Combo
  - Fully automatic dual interface inlay assembling
- Collating
  - 2 fully automatic line co-designed w/ vendor
  - Tightly couple's w/ lamination machines

# Capabilities Overview – cont'd

- Lamination
  - 3 fully automatic line improved from Shanghai factory version
- Card finishing
  - 1 modular punching, inspection line
- Personalization/Programming
  - Custom designed machine w/ vendor
  - Programming for all LF/HF protocols and magstripe
  - Laser Engraving
  - DoD Printing
  - 2 side full personalization in 1 pass

# Products Gallery

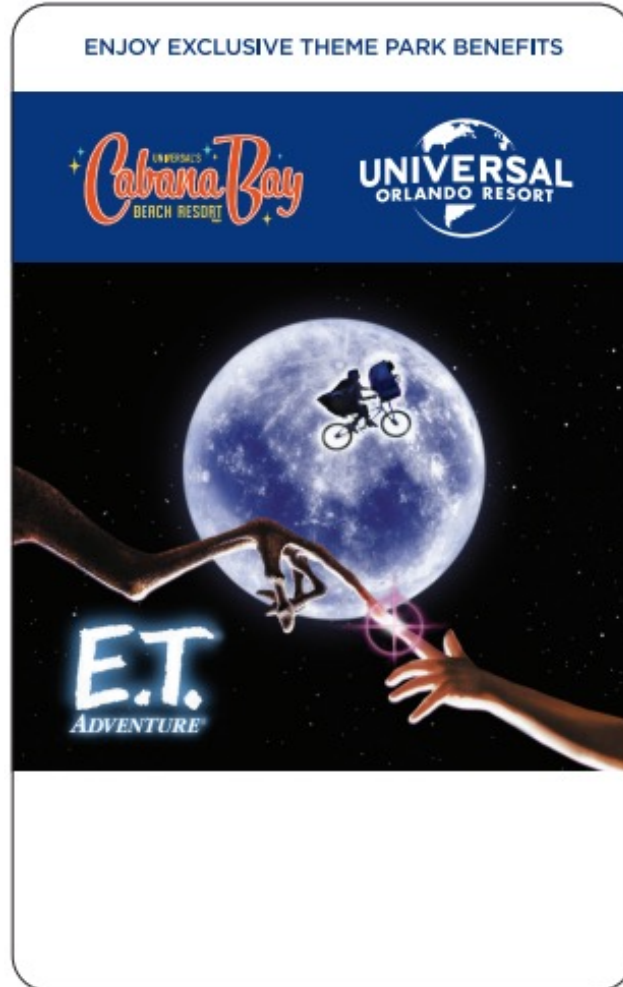
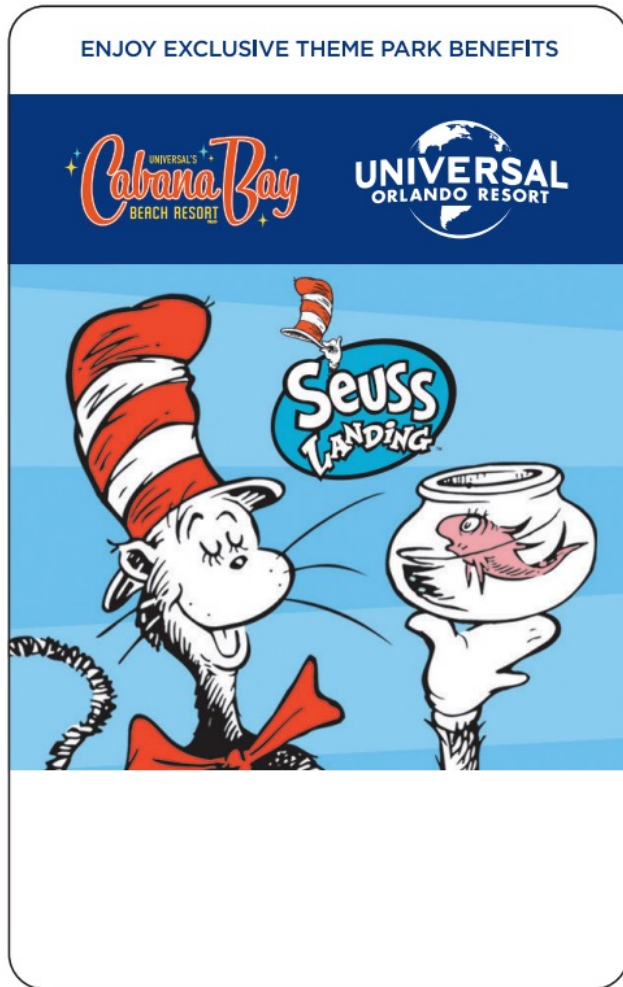




# Products Gallery



# Products Gallery



# Products Gallery



# Thank you

Please check back in a few days when the site is up